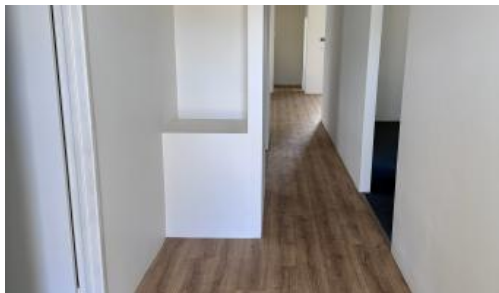


Leased



109 Beachside Pde, Yanchep



## Popular Beachside Location - Yanchep Capricorn Estate

Great sized 3 x 2 property situated on the Capricorn Estate, Yanchep

Close to the schools, Shopping and glorious Yanchep Coastline

Features of this Spacious property include but are not limited to the following:

- Immaculate newly installed front garden
- Spacious open plan kitchen, dining and family area
- Master Bedroom with walk in robe and Ensuite
- 2 additional double sized bedrooms
- Activity area by minor bedrooms
- Family laundry with ample cupboard, bench space and storage
- Rear Alfresco and good sized easy care gardens to rear
- Shed
- Double Garage with shoppers entrance through Laundry
- Reverse Cycle Air con

🏠 3 🛏️ 2 🚿 2

**Price** LEASED \_ in 3 days - \$595  
a week

**Property Type** Rental

**Property ID** 353

**Agent Details**

Jo Johnston - 0450 321 884

**Office Details**

VUE Realty  
0450 321 884

**VUE**  
REALTY

Please email [pm@vue-realty.com](mailto:pm@vue-realty.com) to enquire

Applications welcomed via [realestate .com](https://www.realestate.com)

The above information provided has been furnished to us by the vendor/s. We have not verified whether or not that information is accurate and do not have any belief in one way or the other in its accuracy. We do not accept any responsibility to any person for its accuracy and do no more than pass it on. All interested parties should make and rely upon their own inquiries in order to determine whether or not this information is in fact accurate.