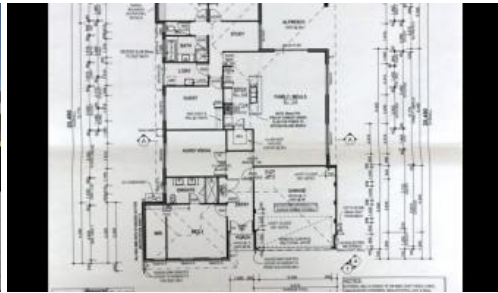


Leased



9 Explorer St, Yanchep



Something a little bit special... 4 x 2 in great location - Fancy a Sea Change?

🏠 4 🛏 2 🚗 2

This Spacious Property really is a cut above the rest.

With quality finishes throughout - a real home from home.

It is situated on the popular Capricorn Beach Estate and surrounded by other beautiful homes, and open spaces and only a short stroll to the Stunning Yanchep Lagoon.!

Viewing really is a must!

FEATURES INCLUDE BUT ARE NOT LIMITED TO:

- Impressive double entry
- Master bedroom is king-size with large, fitted robe and ensuite with double vanity and double shower
- Media or second living with double timber French doors
- Main kitchen, dining, living that leads out to a large under-roof alfresco/entertainment area.
- Kitchen has a huge walk-in-pantry, scullery, 90cm quality appliances, dishwasher and double fridge recess.
- Bedrooms 2, 3 and 4 are all queen-size with double robes.

Price Leased \$600 a week

Property Type Rental

Property ID 156

Agent Details

Jo Johnston - 0450 321 884

Office Details

VUE Realty

0450 321 884

VUE
REALTY

- Main bathroom
- Separate WC
- Great size Laundry
- Reverse cycle AC ducted and zoned.
- Practical but stylish wood-look flooring to all high traffic areas
- Quality carpets to bedrooms and media room
- Tiling to wet areas
- Solar system
- Solar hot-water
- Easy-care gardens to front and rear
- Garage with high garage door feature
- Private Alfresco area
- Space to the side of the drive for a caravan or boat parking

All applications through [ignite - realestate.com](https://www.ignite-realestate.com)

enquiries to admin@vue-realty.com

The above information provided has been furnished to us by the vendor/s. We have not verified whether or not that information is accurate and do not have any belief in one way or the other in its accuracy. We do not accept any responsibility to any person for its accuracy and do no more than pass it on. All interested parties should make and rely upon their own inquiries in order to determine whether or not this information is in fact accurate.